


  
**STONE POINT**
  
 APARTMENTS



**Bedrooms: Three**  
**Bath: Two**  
**Square Feet: 1381**  
**Starting Rent:**

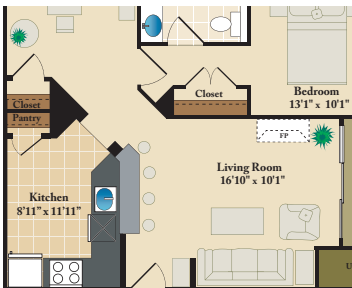
**FEATURES**

- Nine-Foot Ceilings
- High-Speed Internet Available
- Wall-to-Wall Berber Carpeting
- Walk-in Closet
- Ceramic Tile Baths
- Full Size Washer and Dryer In Unit
- Balcony or Patio
- Gourmet Kitchens with Pantry and Breakfast Bar
- Gas Cooking
- Microwave
- Granite Countertops
- Beautifully Styled Maple Cabinetry
- Refrigerator with Ice Maker
- Built-in Computer Work Station
- Black Appliances
- Gas Heat
- Cable Ready

*Available Apartment Features:*

- Elevator Unit
- Fireplace

**VARIATION**



Living Room Entry w/ alt.  
 Kitchen 1382 sq/sf

**THOMAS POINT LIGHT**  
 3 BEDROOM 2 BATH

DISCLAIMER: All dimensions are approximate. Detailed architectural drawings are available in leasing office to ensure accuracy and understanding of apartment size. Furniture plan is for presentation only and may not be to scale.

